

## GAS TURBINE SOLUTIONS

Power Services Group (PSG) provides comprehensive maintenance, repair and overhaul support for a **wide range of gas turbines** used in the power generation, oil & gas and industrial markets.

From single engine owners to multi-brand fleet operators, Power Services Group ensures that owners and operators of gas turbines receive **high-quality, innovative and cost-effective solutions** that are tailored to the needs of their individual operational goals.

We offer expert field services for planned and unplanned maintenance, borescope inspections, unit troubleshooting, and generator support. Our supply chain partners provide advanced technology component repair service and capital part manufacturing solutions.

### OEM MODELS SERVICED BY POWER SERVICES GROUP:

OEM	Gas Turbine Type
GENERAL ELECTRIC	Frame 3, 5, 6, 6F, 7, 7F, 9
WESTINGHOUSE	W171, W251, W501
ALSTOM	GT11, GT13

### SERVICES PROVIDED

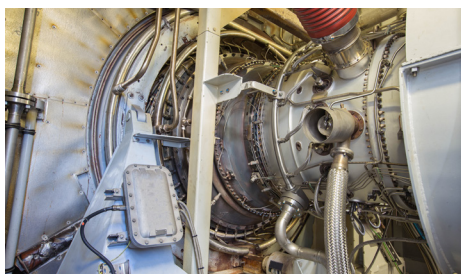
- Open, Clean, Inspect, and Close (Field Services)
- Borescope Inspections
- Combustion Inspections
- Hot Gas Path Inspections
- Major Inspections
- Bearings
- Rotor Repairs, Inspection, and Refurbishment
- Field Machining
- Controls Inspection and Calibration
- Capital Parts Repair & Replacement
- Generator Inspection and Testing
- Total Turbine Care® (Customer-Focused Service Agreement)

### WHY POWER SERVICES GROUP?

As a **leading Independent**, we focus on finding the best solution for each customers business needs. We take time to understand individual requirements, and apply our **skills, industry knowledge, safety focus, flexibility, and experience** to develop the right services to meet clients objectives.

Our **comprehensive scope of service** puts us in a unique position to provide complete solutions from a single source. Customers benefit from a simplified supply chain, with better business transparency and accountability for delivery, on time and on budget.

We are structured around the **markets we serve**. Our teams and business processes make us easy to work with. By focusing resources around whats important to customers, we are able to be more responsive, provide integrated service, and build long-term partnerships.



**800-226-7557**